



Advanced Technology in
Building Chemistry Materials



**Cementitious Waterproofing,
Damp Proofing, and Acrylic Roofing**

**Concrete Repair, Industrial Grouts,
SL Underlayments, and Adhesives**

**Construction Joint Sealants,
Waterstops, and Preformed Gaskets**

Concrete Products and Admixtures

Stuccos and Plasters



PRODUCT GUIDE

Protection and Reliability

subject to high-quality standards

A Company Dedicated to the Development of High-tech Solutions



The optimal performance of RETEX Cementitious Products is based on key factors that formulate efficient materials. Among other we can mention the 100% mineral composition with excellent particle distribution, the capacity of monolithic integration to porous substrates, and the high resistance to both positive and negative hydrostatic head pressure.

Manufacturing of RETEX Products is monitored under strict Quality Control and Assurance Systems, with trained personnel supported with specialized lab equipment, and based on the primary use of Premium Raw Materials. Semi-automatized Manufacturing and Packaging processes are used for the production of RETEX Materials, offering constant reliability in performance on each one of them. Since 2012, RETEX has a Quality Control Process certified under ISO 9001-2015.

With a recognized brand performance since 1981, both in Mexico and in foreign countries, RETEX has consolidated trust and prestige for the manufacturing of the following Product Lines:

Cementitious Waterproofing and Acrylic Roofing

Multi-layer and/or Multi-product Systems, Ecological and Durable

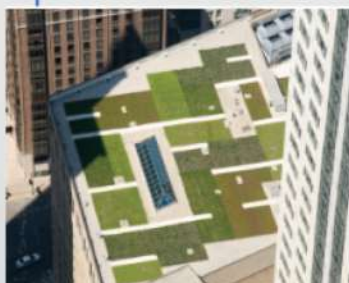


CEMENTITIOUS WATERPROOFING AND DAMPPROOFING

- SELLOTEX** Waterproofing base coat for porous substrates, subject to water pressure.
- SELLOTEX UH** Waterproofing top coat for substrates subject to constant water pressure.
- SELLOTEX R** High chemical resistant waterproofing, rapid set, base coat, for porous substrates.
- SELLOTEX UH R** High chemical resistant waterproofing, rapid set, top coat.
- SELLMEX** Modified Cementitious semi-rigid waterproofing for horizontal concrete.
- SELLMEX LASTIC** Elastic Bi-component system for Green Roofs and Terraces.

ACRYLIC ROOFING

- SELLOFLEX THERMO** Acrylic Thermal Resistant Roofing System for Sustainable Construction.
- SELLOFLEX FIBRATADO 3A** Fiber reinforced acrylic roofing system, 3 Year Lifetime.
- SELLOFLEX FIBRATADO 5A** Fiber reinforced acrylic roofing system, 5 Year Lifetime.
- SELLOFLEX 3000** Acrylic Economic Roofing System, 3 Year Lifetime.
- SELLOFLEX 5000** Acrylic Residential Roofing System, 5 Year Lifetime.
- SELLOFLEX 7000** Acrylic Premium Roofing System, 7 Year Lifetime.
- SELLOFLEX WALL** Elastomeric Decorative and Waterproofing Coating for Exterior Use.
- SELLOFLEX SELLO** Acrylic Primer and Sealant for SELLOFLEX Systems.
- SELLOFLEX CEMENTO** Acrylic Compound for Cracks and Joints in SELLOFLEX Systems.
- SELLOFLEX REFUERZO** Reinforcement Mesh of Simple Polyester. Reinforcement mesh of Modified Polyester.



Concrete Repair, Grouts and Self-Leveling Compounds



Repair and Resurface of Concrete, Mortar and Cement

NON-METALLIC, NON-SHRINK CEMENT GROUTS

- GROUTEX NM** Hydraulic mortar, variable flow, high strength for precision anchoring.
- GROUTEX NM 800** Rapid Set Hydraulic mortar, high strength for precision anchoring.
- GROUTEX NM 400** Hydraulic mortar, Mid-flow, high strength for precision anchoring.

REPAIR MORTARS AND GROUTS

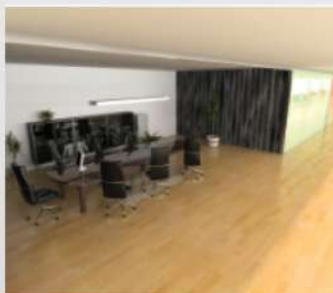
- AQUAPLUG** Instant setting hydraulic mortar to seal water leaks through concrete.
- CONCRETEX** Repair mortar for industrial flooring and horizontal concrete restoration
- CONCREPATCH** Thixotropic mortar for vertical and overhead patching and restoration.
- CONCREPATCH SLURRY** Rust inhibiting primer for reinforcement steel and metal plates.
- AUTOPATCH** High-strength mortar, fast-setting, for concrete roads and pavements.
- MORTERO RETEX** Hydraulic repair mortar with high chemical resistance environments.
- CONCREFINISH** Polymeric feather edge compound for concrete smooth finishes.
- CONCREPATCH XF** Fast setting micro cement, with extraordinary adherence, for resurfacing interior finishes.

EPOXY AND POLYURETHANE INDUSTRIAL AND COMMERCIAL USE FOR REPAIR AND PROTECTION

- EPOXIRETEX ADHESIVO** Epoxy high-performance bonding bridge, to optimize the adhesion of fresh and cured concrete/mortar.
- EPOXIRETEX BC300** Epoxy primer to seal porous surfaces prior to installing EPOXIRETEX Systems.
- EPOXIRETEX BC350** Epoxy primer to enhance bonding in multiple-layer EPOXIRETEX Systems.
- EPOXIRETEX RM450** Epoxy Mortar for concrete repair, patching, void filling, and resurface on concrete floors.
- EPOXIRETEX GM470** Epoxy Non-shrink grout, high-strength, for industrial anchoring.
- EPOXIRETEX TC606** Epoxy coating system for industrial, comercial, and residential flooring.
- POLIURETEX BARNIZ** Clear polish polyurethane for concrete flooring and SLU Systems like NIVELTEX

SELF-LEVELING UNDERLAYMENTS, CERAMIC ADHESIVES AND JOINT GROUTS

- NIVELTEX-RG** High-flow leveling compound, for thicker leveling needs from 20-60 mm, prior to SLU coronation.
- NIVELTEX ULTRA** Self-leveling topping for industrial flooring and external decks.
- NIVELTEX** Cementitious Self-Leveling Underlayment (SLU) multipurpose for interior use.
- NIVELTEX 200** Cementitious SLU, fast setting and high-strength, for interior use.
- NIVELTEX 160** Cementitious SLU, normal setting, for 10mm to 50 mm thickness.
- NIVELTEX 100** Cementitious SLU, normal setting, for 3mm to 15 mm thickness.
- NIVELTEX-Y** Gypsum Based SLU for interior use, for 10mm to 50 mm thickness..
- ACRYLPRIMER** High-Solids Acrylic primer for RETEX Repair and SLU Systems.
- PEGAPORCELANATO STANDARD** General Purpose Adhesive por Porcelain and Ceramic Tile.
- PEGAPORCELANATO PLUS** Reinforced Adhesive for "Tile over Tile" application.
- PEGAPORCELANATO PREMIUM** High Performance Adhesive for Vertical and Large Format application.
- PEGAZULEJO** General Purpose Adhesive for high-absorption ceramic tile.
- BOQUILLA FINA RETEX** High Performance pigmented Grout, fine grain, for filling joints in tile flooring.



Joint Sealants and Waterstops

Long-lasting systems for joints subject to water immersion



SINGLE-COMPONENT POLYURETHANE JOINT SEALANTS

- SELLORETEX M** Multipurpose polyurethane sealant for construction joints.
- SELLORETEX AN** Self-leveling polyurethane sealant for horizontal construction joints.
- SELLORETEX SR** Fast-curing polyurethane sealant for construction joints.
- SELLORETEX ROAD** Polymer-modified polyurethane sealant for joints in concrete roads.
- BACKER-ROD** Preformed filler for horizontal construction joints.

PREFORMED BITUMINOUS, PLASTIC AND PVC WATERSTOPS

- SYNKO-FLEX** Preformed bituminous sealant for cold joints, non-swelling, non-toxic.
- SYNKO-FLEX FR** Preformed sealant for cold joints exposed to hydrocarbon solutions.
- HYDRO-FLEX** Preformed "expansive" hydrophilic sealant for cold joints.
- RAM-NEK** Watertight seal for precast elements like pipe and manholes.
- SYNKO-PRIMER** Asphalt solvent-based primer to enhance adherence of Waterstops.
- JUNTARETEX PVC** Preformed Plastic PVC profiles for cold joints.



Concrete Products and Admixtures

Improve the natural performance and capacities of cement mixes



ADHESIVES FOR CONCRETE, CEMENT, MORTAR, AND RETEX PRODUCTS

- ACRYLTEX** Acrylic High-solids adhesive compound for RETEX Products.
- ACRYLBOND** Acrylic adhesive compound for concrete and mortar.
- ADHELATEX** Synthetic adhesive compound for concrete and mortar.

CONCRETE AND CEMENT ADMIXTURES

- GRALTEX** Dry High-solids compound to reduce water permeability in cement mixes.
- REDUMEX P** Water reducer and plasticizer.
- ACCELERATEX** Accelerating agent for cement setting time, with chloride.
- RETARDEX P** Retarding agent, water reducer and plasticizer.
- PLASTIMEX 100** Superplasticizer, high-range water reducer, and accelerator.
- PLASTIMEX 320** Superplasticizer, high-range water reducer, and retarder.

CONCRETE AND CEMENT PRODUCTS

- CURARETEX E** Water-based curing compound, white.
- CURARETEX E-R** Water-based curing compound, red.
- CURARETEX A** Acrylic-based curing compound, blue.
- CURARETEX S** Solvent-based curing compound, red.
- MOLDURETEX E** Water-based form release agent, white.
- MOLDURETEX E PASTA** Water-based, high-viscosity, form release agent for precast.
- MOLDURETEX H** Hydrocarbon-based form release agent, high yield, blue.
- MOLDURETEX XR** High Performance, minimum viscosity, form release agent for metallic forms.
- MOLDURETEX S** Solvent-based form release agent, yellow.
- ENDURETEX** Mineral hardener for concrete floors, cement-free.
- ENDURETEX LPU** Ready-to-use, Mineral hardener for concrete floors.
- SILIDUREX** Chemical hardener and curing agent for concrete.
- RUGARETEX** High-Viscosity superficial retardant for concrete surface finishes.



Decorative Textured Coatings

Cover and decorate all kinds of surfaces, interior and exterior



SELF-CURING ACRYLIC STUCCOS (DRY)

PLASTITEX BASE COAT	Modified Cement for smoothing semi-porous substrates.
PLASTITEX BASE COAT AD	High-adherence modified plaster for smoothing panels.
PLASTITEX POLISH COAT	Feather-edge smoothing plaster for patching and detailing.
PLASTITEX TOP COAT	Water-repellent texture plaster for decorative finishes.
PLASTITEX FINIPLASTER	Acrylic Stucco, water repellent, for superfine decorative finishing systems, interior and exterior.
PLASTITEX CUADRIMALLA FV	Glassfiber reinforcement mesh for lightweight construction systems.

TEXTURED ACRYLIC COATINGS (WET)

PLASTITEX "READY-MIX"	Synthetic superfine plaster, for gypsum boards and panels, in lightweight construction systems.
PLASTITEX MIX COAT	Extra-fine, skim-coat acrylic paste for very smooth finishes.
PLASTITEX A-1000	Residential Grade acrylic paste for interior and exterior texture finishes.
PLASTITEX A-500	Commercial Grade acrylic paste for interior and exterior texture finishes.
PLASTITEX A-300	Contractor Grade acrylic paste for interior texture finishes.
PLASTITEX QUARZO SAND	Fine Quartz texture acrylic paste for exterior application.
PLASTITEX QUARZO ROCK	Coarse Quartz texture acrylic paste for exterior application.
PLASTITEX CDN	Sanitary acrylic texture coat, low VOC, for hospital application.
PLASTITEX BARNIZ SATIN	Transparent, high-gloss, varnish, for Interior use.
PLASTITEX ESMALTE SATIN	Pigmented high-gloss enamel coat for interior use.
PLASTITEX SELLO FONDO	Pigmented acrylic surface sealant primer.
PLASTITEX SEAL 200	Solvent-based Hydrophobic sealant, for exterior use, over porous substrates.
PLASTITEX SEAL 100	Water-based Hydrophobic sealant, for interior and exterior use, over porous substrates.

THERMAL, FIRE RETARDANT AND INTUMESCENT COATINGS

PLASTITEX THERMO	Thermal insulating plaster for Sustainable Construction, exterior use.
PLASTITEX THERMO FR	Cement-based thermal insulation plaster, fire retardant, with low thermal conductivity.
PLASTITEX THERMO INDUSTRIA	Cement-based thermal insulation mortar, fire retardant, for industrial application.
PLASTITEX GYPSUM FONDO	Gypsum-based thermal insulation plaster, fine grain, for interior use.
PLASTITEX GYPSUM RENDER	Gypsum-based thermal insulation plaster, coarse grain, for interior use.
PLASTITEX FIRE PROTECT COAT	Intumescent Coating System, to protect metallic structures against fire.
PLASTITEX FIRE PROTECT PRIMER BA	Water-based Primer to enhance bonding of Intumescent Systems.

CEMENT WATER-REPELLENT STUCCOS (DRY)

PLASTITEX MASILLA	Fiber-reinforced plaster for smoothing and finishing.
PLASTITEX TEXTURA	Fiber-reinforced, water-repellent plaster for texture finishes.
PLASTITEX BASE	Cement-based Stucco for smoothing masonry and concrete substrates.
PLASTITEX CEMENTOSO F	Fine Stucco for smooth finishes over masonry and concrete substrates.
PLASTITEX CEMENTOSO STUCCO	Coarse Stucco for textured finishes over masonry and concrete substrates.
SELLOTEX C	Cementitious waterproofing and decorative coating for humidity and efflorescence.
FINITEX	Cementitious waterproofing paint for smooth finishes.





Advanced Technology in Building Chemistry Materials

RETEX extends its coverage within the Mexican Territory with a strong Distribution Network, supported by Technical Regional Managers that offer technical assistance on site. Our team we offer not only technical assistance, but also training, to both private and public projects, throughout our nation. Our Quality Assurance Warranty applies to all products manufactured by RETEX, as it is detailed in our website www.retex.com.mx For further information related to RETEX Products and Systems, please contact our Technical Department.



Recubrimientos Texturizados, S.A. de C. V.
 Av. Asociación de Industriales No. 32, Parque Industrial Cuamatla,
 Cuautitlán Izcalli, Estado de México, C.P. 54730
 Conm.: (55) 5870-32 88 Fax: (55) 5872-5097
 Del interior: 01800 70-RETEX (73839)
 Asistencia Técnica RETEX: ventas@retex.com.mx
 Redes sociales: Retex / Recubrimientos Texturizados
 Retex Impermeabilizantes
 55 46 15 77 28
 RETEX Recubrimientos Texturizados
 Retex Impermeabilizantes



www.retex.com.mx

Distribuidor Autorizado